



PimpriChinchwad Education Trust's
S. B. PATIL INSTITUTE OF MANAGEMENT
*NBA Accredited | NAAC Accredited | AICTE Approved | Permanently Affiliated
to SPPU, Pune*
Sector No. 26, ,Pradhikaran, Nigdi, Pune - 411 044.
Phone: 020-27656900 / 87960 76060 / 78875 70600
Email: sbpatilmba@gmail.com, **Website:** www.sbspatilmba.com



Mechanism of Communication & Methods of Measuring Attainment: PO's/ PSO's/CO's

The MBA Programmer is affiliated to SavitribaiPhule Pune University, and follows Syllabus (2019 Pattern). The COs of Courses are mentioned in the SPPU Syllabus. Program Specific Outcomes (PSOs) are framed by brain storming and intensive discussions undertaken by Faculty members in consultations with Management. PO's and PSO's are well communicated to students at the time of admission counseling, through information brochure, institute website and at the time of executing various events.

Then Comprehensive Concurrent Evaluations are framed by respective course teacher in synch to CO's and is communicated to students, well in advance in their classroom sessions along with mode of conduction, assessment parameters (rubrics), score and frequency.

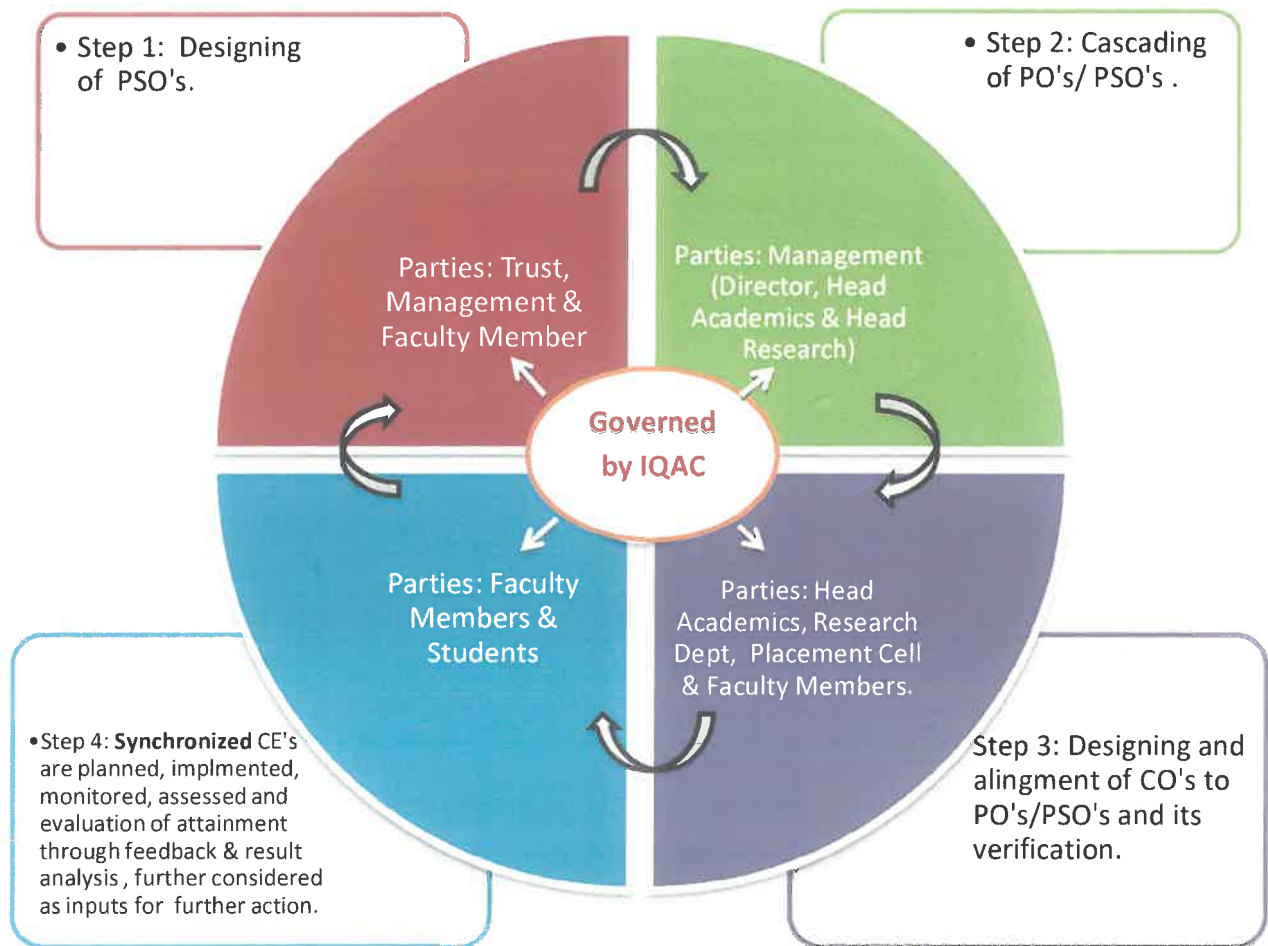




PimpriChinchwad Education Trust's
S. B. PATIL INSTITUTE OF MANAGEMENT
NBA Accredited | NAAC Accredited | AICTE Approved | Permanently Affiliated
to SPPU, Pune
Sector No. 26, Pradhikaran, Nigdi, Pune - 411 044.
Phone: 020-27656900 / 87960 76060 / 78875 70600
Email: sbpatilmba@gmail.com, Website: www.sbpatilmba.com



Planning and Designing Stage : FLOW CHART



[Handwritten signature]



PimpriChinchwad Education Trust's
S. B. PATIL INSTITUTE OF MANAGEMENT
NBA Accredited | NAAC Accredited | AICTE Approved | Permanently Affiliated to SPPU, Pune

Sector No. 26, ,Pradhikaran, Nigdi, Pune - 411 044.

Phone: 020-27656900 / 87960 76060 / 78875 70600

Email: sbpatilmba@gmail.com, Website: www.sbspatilmba.com



Flow Chart: Mechanism of Communication & Methods of Measuring Attainment: PO's/ PSO's/CO's

